



TUCUMÁN, ARGENTINA

SHORT DRIVES, ENDLESS DOVES



DETAIL COMPANY ADVENTURES

EXCEPTIONAL SPORTING DESTINATIONS
IS ONLY PART OF IT™



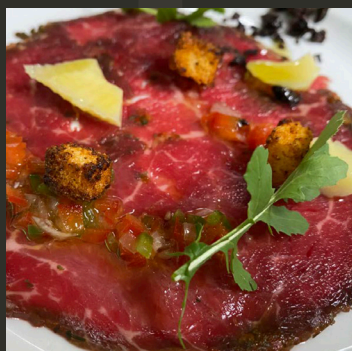
THE LODGE

Tucumán is the newest frontier in dove hunting in Argentina. It encompasses over 120,000 acres and distant views of the Cocha Mountains. This working ranch has been recently remodeled to make it both comfortable and functional.

The lodge is ideal for small groups. Groups of eight or more can book the entire lodge with a sleeping capacity of up to 12 people.

FEATURES

- 6 double rooms with queen size beds and en-suite bathrooms
- Open bar with fine wines
- Gourmet, farm-to-table dining
- Fire Pit
- Wi-Fi
- Masseuse, maid, & laundry service
- Professional hunting guides
- Gun rental with shotguns from Beretta, Benelli, and Browning
- Gift shop



LOCATION

With less than a two-hour ride from Tucumán Airport (TUC), or just 45 minutes from the Río Hondo airport (RHD); most flights will have you arriving in the morning, and swinging a shotgun just after lunch.



DETAIL COMPANY ADVENTURES

EXCEPTIONAL SPORTING DESTINATIONS
IS ONLY PART OF IT™



THE HUNTING

There are roughly twenty-five shooting positions that are just a short drive away through the region's rich farmland. The overwhelming number of birds flying over our terrain throughout the day guarantees great opportunities for non-stop shooting, suitable for all skill levels. Beginners have an unparalleled opportunity to improve their shooting skills by targeting low-flying doves, while more experienced shooters will find higher, faster targets a challenge. And like elsewhere in Argentina where doves are abundant, there is no bag limit.

In addition to the acreage surrounding the lodge, we also have the exclusive rights to many of the most revered dove hunting properties in the province, in the highlands and plains areas:

- Shot migration routes: a point between the resting area and the feeding field.
- Fields: crops, such as soybeans, corn or sorghum (especially from March to May).
- Food Batches: Birds congregate to harvest large food batches. They are excellent hunting options at certain times of the year (March to July).
- Waterholes: These are excellent options to photograph, especially in summer (October to April).



In the field, you will be assigned professional, experienced hunting guides and field assistants who will direct you to your shooting stand and serve as a loader should you wish.



DETAIL COMPANY ADVENTURES

EXCEPTIONAL SPORTING DESTINATIONS
IS ONLY PART OF IT™

DAILY ITINERARY

Morning will begin with a wake-up call, approximately an hour before departure time. Breakfast will be served shortly thereafter, with everything from waffles to Eggs Benedict, all made to order. Then it is off to the vehicles for the shooting day.

You will shoot until noon each day, then return to the lodge for an incredible asado lunch, where you will enjoy Argentina's wonderful beef and superb wines. After lunch, and a short siesta, hunters will again begin their afternoon hunt around 3 to 4pm.

Depending on the time of the year, evening hunts last until 6:00 to 7:30pm, after which you will return to the lodge, where you will be met with cocktails and appetizers, followed by a delicious dinner and time to relax.



DETAIL COMPANY ADVENTURES

EXCEPTIONAL SPORTING DESTINATIONS
IS ONLY PART OF IT™

READY TO PLAN YOUR ARGENTINIAN ADVENTURE?

Give us a call today and let's get started. We can customize your trip based on your interest in ducks, perdíz, pigeon, fly-fishing, or big game hunting

713.524.7235 · jeriboath@detailcompany.com



DETAIL COMPANY ADVENTURES

EXCEPTIONAL SPORTING DESTINATIONS
IS ONLY PART OF IT™